

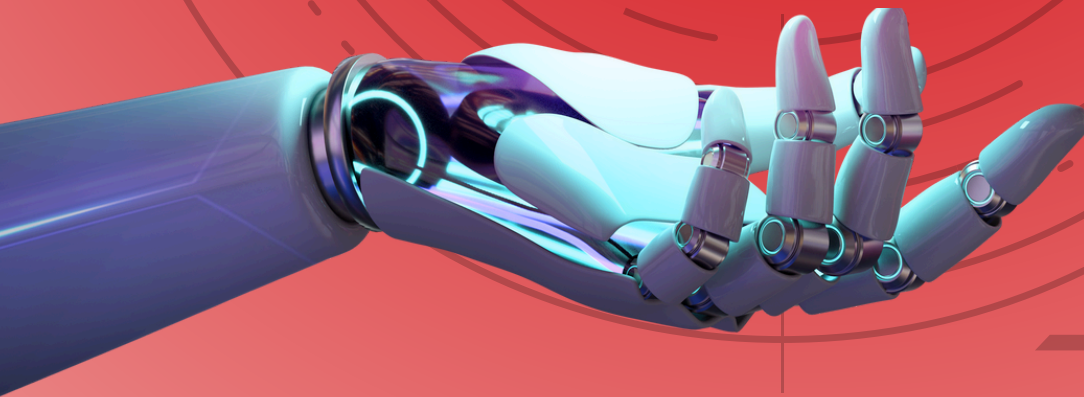


AI APPLICATIONS IN CONSTRUCTION



DECEMBER 10 | 11 AM - 12 PM | VIA ZOOM

Join us for an engaging session on the transformative role of AI in the construction industry with Erin Khan, an established AEC technology leader. With over a decade of experience, Erin will share her insights on how AI is reshaping our industry. In this webinar, we'll explore recent research on AI's impact, discuss risks and opportunities, and learn about essential technologies like predictive analytics and automation. Discover practical applications, including project planning, safety monitoring, and predictive maintenance, while accessing valuable resources for further exploration. The session will conclude with a Q&A, inviting you to engage directly with Erin. Don't miss this opportunity to explore the future of construction!



To RSVP, please email Rowanne Khafagy at rkhafagy@thewpcca.com